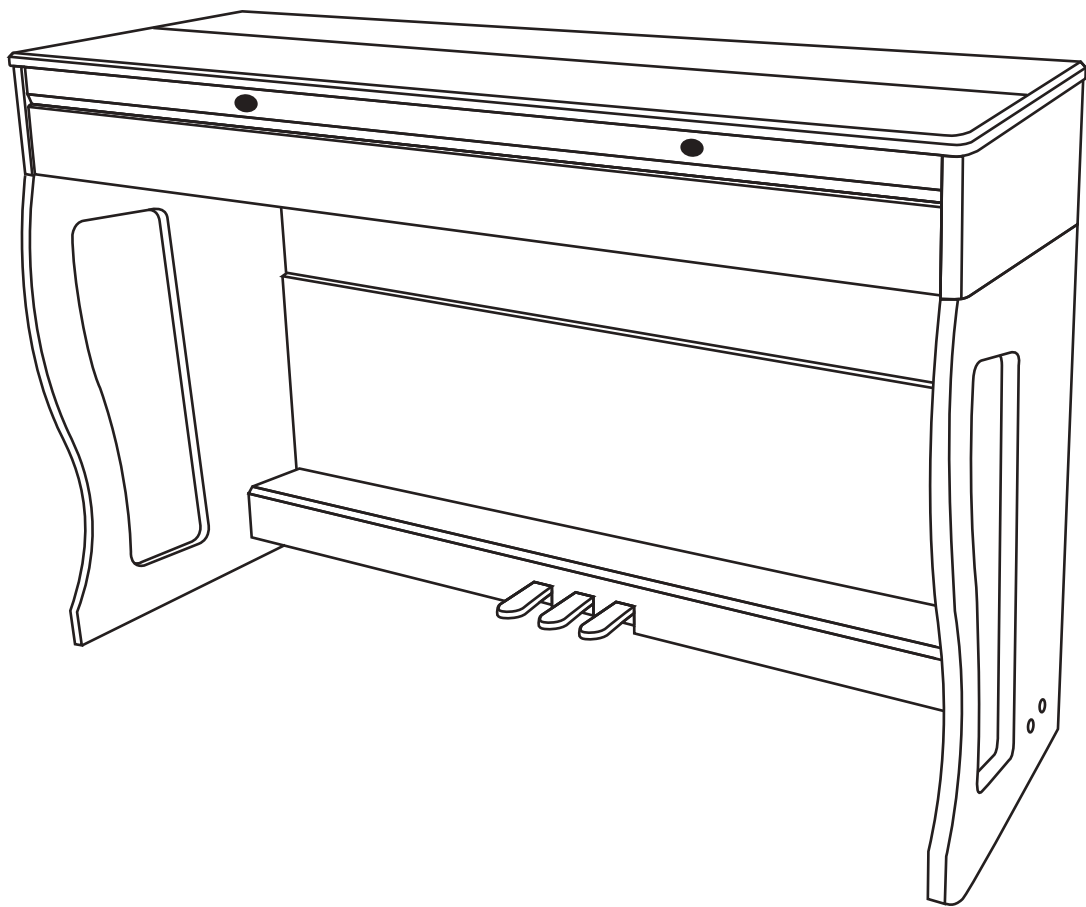


DIGITAL PIANO USER MANUAL



This product is subject to change without prior notice



FUNCTION INTRODUCTION

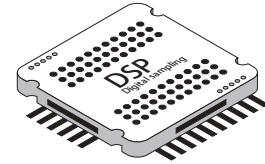
Thank you for choosing our digital piano. This product is elegant and exquisite. It is the perfect presentation of contemporary new electronic technology and acoustics.

- Before using the instrument, you must read this manual carefully.



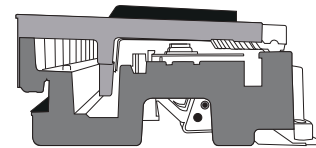
DIGITAL SOUND SOURCE BASED ON DSP

Its core uses DSP new digital sound source, digital audio analog sampling, for your performance to bring realistic hearing experience.



88 PROGRESSIVE HEAVY HAMMER KEYS

88 key progressive lever heavy hammer keyboard gives you a real touch like playing on a grand piano.



- Item No.: C-806
- Product features: Clamshell
- Appearance: Black and white wood grain
- Keyboard: 88 standard heavy hammer keyboard (including black keys)
- Source: French Dream Source 5716
- Tone: 610、 rhythm : 400、 Demonstration song : 120、 polyphony : 256
- Power switch/master volume control
- Weak tone / sustain / extended tone (three pedals)
- MIDI function / audio output / audio input
- Dual headphone audio output
- USB interface link: cell phone, tablet, computer
- Product specification: 135*35*75cm
- Weight: 32KG
- Power supply: 15V2A

REMARK !

- This product is an electro-acoustic instrument product. It is normal that there is a little current sound in the speaker or earphone after power-on.
Keep away from "radio, TV, antenna receiver, router, refrigerator, TV, motor and other RF electrical interference sources" during use.



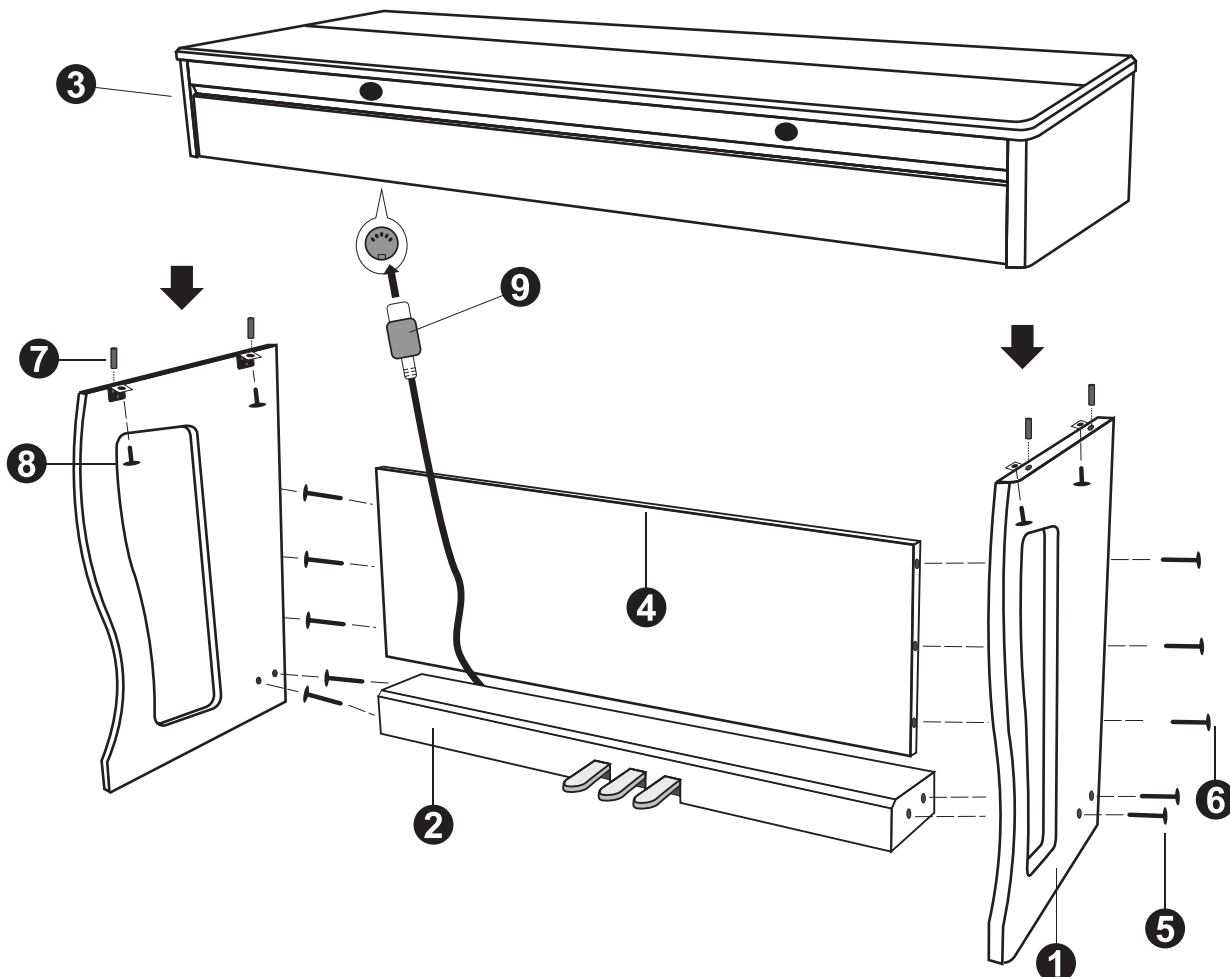
| | |
|-----------------------------------|-----------|
| Function introduction | 1 |
| Catalog | 2 |
| Installation guide | 3 |
| Wooden stand installation | 3 |
| Illustration of the socket | 4 |
| Power cord connection | 4 |
| Audio output/input interface | 4 |
| MIDI output/input interface | 4 |
| USB transfer interface | 4 |
| Double headset socket | 4 |
| Pedal socket | 4 |
| Pedal unit function | 5 |
| Function Operation | 6 |
| Appendix | 10 |
| Product maintenance | 14 |
| Safety precautions | 15 |
| Warranty Card | 18 |



Installation Guide

Attention !

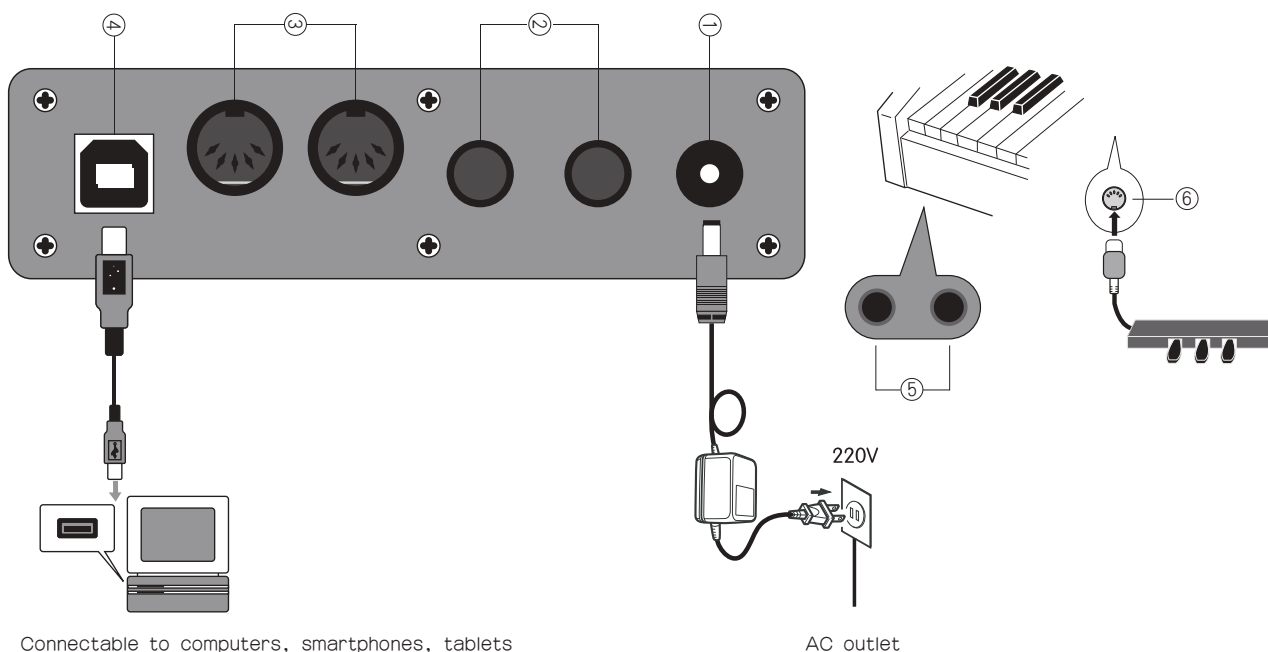
- This product needs to be installed by adults, do not allow minors to install independently!



- ① Left/Right Support Plate
- ② Pedal beam
- ③ Piano box
- ④ Back fixing plate
- ⑤ Flat head screw (M6 *50 = 4 PCS)
- ⑥ Tap screw (M6 *60 = 8PCS)
- ⑦ Bottle (4 x 40 = 4 PCS)
- ⑧ Short screw (M6 x 20 = 4 PCS)
- ⑨ Pedal insertion



Illustration of the socket



Connectable to computers, smartphones, tablets

AC outlet

1 POWER LINE CONNECTION

1. When used according to the access power line, one end is inserted into the socket at the bottom of the piano operation plate. The other end is inserted into the 220V household power socket (Figure 1)
2. If you do not use this product for a long time, unplug the power cord and keep it properly.

2 AUDIO INPUT / OUTPUT PLUG

1. The audio output socket can be connected to large sound box equipment.(Figure 2)
2. The audio input socket connects the external sound source to the electric piano for playback. (Figure 2)

3 MIDI INPUT AND OUTPUT SOCKET

The MIDI interface of this digital piano can be connected to music equipment withMIDI.(Figure 3)

4 USB TRANSPORT INTERFACE

Using the USB transmission interface to connect with the computer Through the computer installed Music software, to learn or play the keyboard to play, composition, storage and other functional operations. Edited music and built-in accompaniment to music software.It can be played by software connected to the digital piano or played by accompaniment music (Figure 4)

5 DOUBLE HEADSET SOCKET

Connecting the headset will automatically cut off the output of the built-in loudspeaker,so it won't disturb others when playing .This product has two headphone sockets,which can insert two headphones at the same time. (Figure 5)

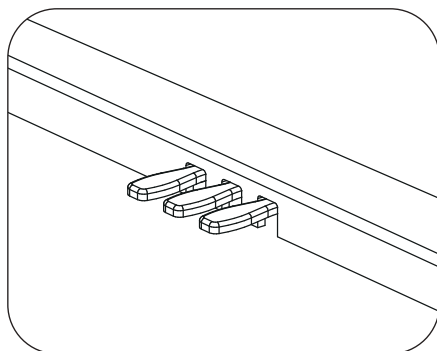
6 PEDAL SOCKET

Insert the end of the pedal line into the circular socket of the bottom of the piano, and you can connect the 3 pedal sound effects .In turn : weak tone, posterior extension and portamento (Figure 6)



Pedal unit function

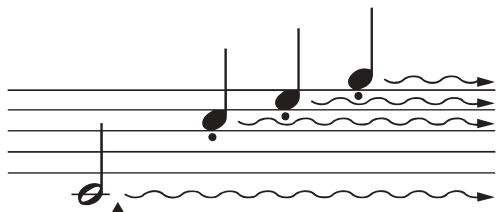
The optional pedal unit is equipped with 3 foot pedals that produce a variety of intense effects similar to those of acoustic piano pedals.



1 Sound-making (right) pedal

The damper pedal functions in the same way as the damper pedal on an acoustic piano. When the damper pedal is depressed, the note will be extended. Releasing the pedal immediately stops the sound.

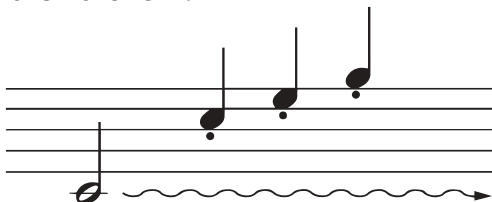
The "half-pedal" effect helps you create a half sustain effect with the damper pedal, depending on how far you depress the pedal.



➡ If you depress the damper pedal here, the note played before releasing the pedal note will be extended for a longer period of time.

2 sustain (middle) pedal

If you play a note or chord on the keyboard and press the sustain pedal, as long as the pedal is pressed (just like a damper pedal) those notes will be extended, but the notes played after them will not be extended. This extends the chord note, while the other notes are "broken".



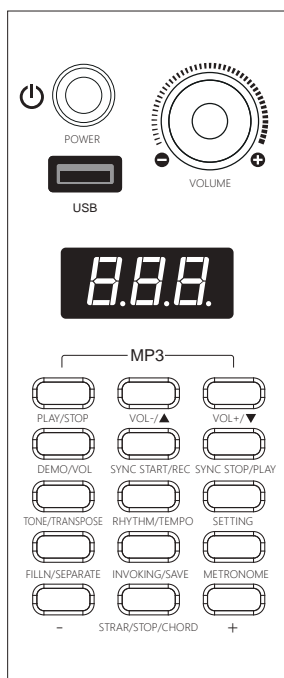
➡ If you press and hold this note and depress the sustain pedal, you can sustain the note until the pedal is released. until the pedal is released.

3 Soft Tone (Left) Pedal

Depressing the soft pedal reduces the volume and slightly changes the tone of the note being played at that moment. Depressing the soft pedal will not affect the notes already played.



Function Operation



1 Master Volume Control

- Use the (Volume) knob to control the master volume level.
- (Volume) knob to the right to turn the master volume increases , The master volume is reduced by turning the (volume) knob to the left.
- Before turning on the power, turn the (volume) knob to the left to turn the master volume to the minimum.
- To turn off the digital piano, first turn the (volume) knob to the left to turn the master volume to minimum.



2 Start/Stop

- This mode is automatically exited in the Playback, Demonstration, Metronome, etc. modes.
- First short press of the (STRAR/STOP/CHORD) key starts the rhythm
- Second short press of the (STRAR/STOP/CHORD) key stops the rhythm

LCD display :

SET
Main A

Button:



STRAR/STOP/CHORD

3 Metronome

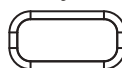
This digital piano has a built-in common metronome for reference when practicing or playing.

- The first time you press the (metronome) key to turn on the metronome, the "da, da, da" sound appears, press the (+) key or (-) key to speed up or slow down the tempo, range: 1/4, 2/4, 3/4, 4/4
- Press the (Metronome) key a second time briefly to turn off the metronome.

LCD display :

SET
ON
Metro

Button:



METRONOME



+



-

4 CHORDS

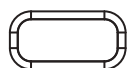
- Short press (Rhythm/Tempo) key - Press (+) or (-) key to select the desired rhythm - Short press (Start Stop/Chord) key to start the rhythm Rhythm 1, long press (Start Stop, Chord) to start the chord function.

Note: The corresponding chord accompaniment is played when the multi-fingerings are pressed in the range of keys A1-F4#.

LCD display :

SET
ON
Chord

Button:



RHYTHM/TEMPO



+



-



STRAR/STOP/CHORD

5 Synchronous start and synchronous stop

- Short press the (Sync Start/Record) key to turn on the Sync Start function.
- Short press the (Sync Stop/Record) key to turn off the sync function.
- When playing a chord, press the (Sync Start/Record) key briefly for the first time - press a key in the A1-F4# range of the chord area to enter sync mode.
- For chord synchronization, please refer to the instructions for single-finger accompaniment or multi-finger accompaniment.

LCD display :

SET
OFF
SynStart

Button:



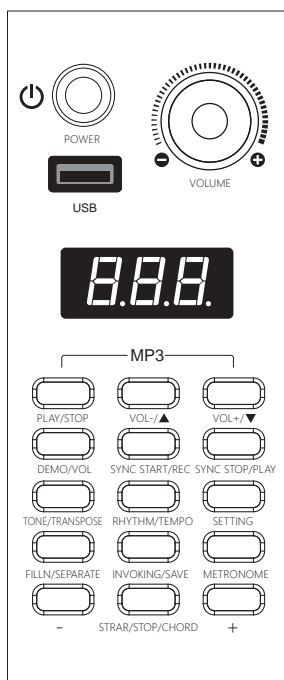
SYNC START/REC



SYNC STOP/PLAY



Function Operation



6 FILLN/SEPARATE

- With the rhythm started, short press the (FILLN/SEPARATE) key to turn on the insert function.
- The insertion function can only be activated with the insertion and release rhythm.
- Short press the (FILLN/SEPARATE) key to toggle between A/B paragraphs.

LCD display : Button:

7 DEMO/VOL

- When starting the rhythm or demonstration song function - Press and hold the (DEMO/VOL) key to turn on the volume function - Press the (+) key or (l) key to adjust the volume.
- The volume is adjusted when the current state is Demo, and the other states are Rhythm volume. Range 000-100 Default 80.

LCD display : Button:

8 RHYTHM/TEMPO

- Press and hold the (RHYTHM/TEMPO) key to switch to the beat type selection, use the (+) key or (-) key to select the beat type, 1/4,2/4,3/4,4/4.

LCD display : Button:

9 TRANSPOSE

- Press and hold the (TONE/TRANSPOSE) key to switch to transpose adjustment, and use the (+) key or (-) key to select the appropriate scale.
- Press the (+) key to increase upwards.
- Press the (-) key to decrease downward.
- Press the (+) and (-) keys simultaneously to shift back to the preset value.
- Shift -12 to 12 Default value is 0.

LCD display : Button:

10 DEMO

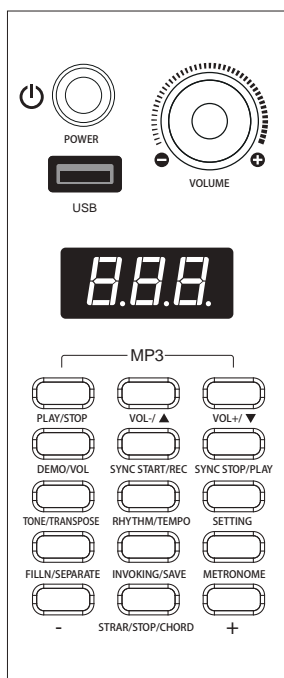
- This digital piano has 120 built-in demos to showcase a wide range of tones. Users can get a first glimpse of this digital piano through the demonstration songs.
 - Short press (DEMO/VOL) to select the desired track with the (+) or (-) key - Short press (STRAR/STOP/CHORD) to start or or stop playing the demo song.
- Short press (SETTING) to select the practice function while playing a demonstration song to enable the left hand/right hand/left and right hand practice functions.

LCD display : Button:

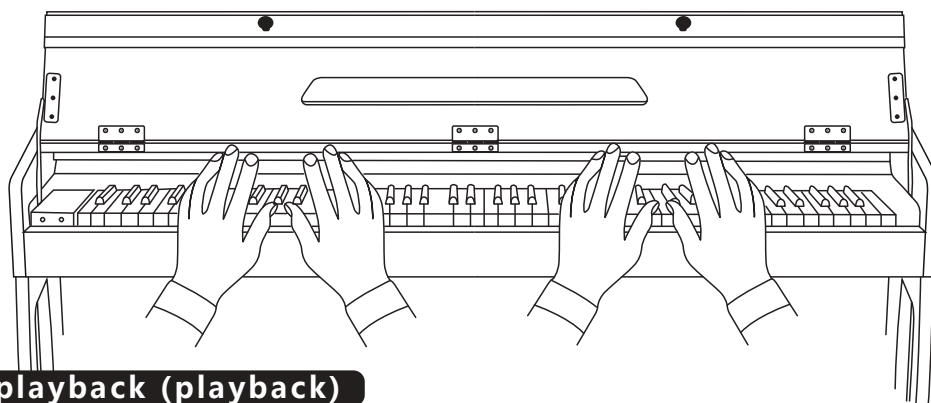


Function Operation

11 DUAL KEYBOARD (DETACHED)

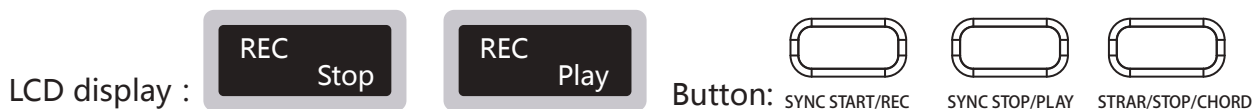


- In the keyboard separation method, the keyboard is divided into two parts with the keyboard separation point, the left hand part is played with a regular tone and the right hand part is played with a different tone.
- Long press (FILLN/SEPARATE) key to open the dual keyboard function - short press (SETTING) key to select the keyboard separation point function, use (+) key or (-) key or directly press the piano key to select the separation point.
- Short press (SETTING) key to enter the setting status, select the left keyboard volume function, you can adjust the left key keyboard volume.
- The first long press of the (FILLN/SEPARATE) key turns on the keyboard separation (dual keyboard) function, and the second long press of the (FILLN/SEPARATE) key turns off the keyboard separation (dual keyboard) function.



12 Recording and playback (playback)

- Press and hold the (SYNC START/REC) key to enter the recording ready state, press any key or short press the (STRAR/STOP/CHORD) key to start recording.
- If the chords are open, the recording includes both the rhythm and the melody, otherwise only the melody is recorded.
- Long press (SYNC START/REC) key or short press (STRAR/STOP/CHORD) key to end recording.
- Press and hold the (SYNC STOP/PLAY) button to play the previously recorded music.



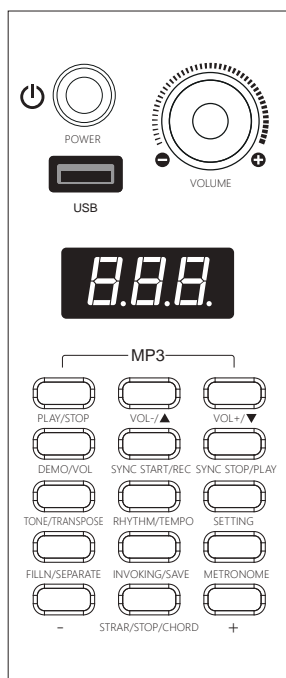
13 STRENGTH

- Long press (SETTING) button to toggle the intensity adjustment.
- This digital piano has multi-level strength touch.
- The power-on default is strength on.





Function Operation



14 TEMPO

- Long press the (RHYTHM/TEMPO) key to switch to the speed adjustment status, use the (+) key or (-) key to adjust knot. You can adjust the tempo of the rhythm, demonstration song, metronome, and recording.
- Press the (+) and (-) keys simultaneously to quickly restore the default tempo of the current tempo or demonstration tune.
- Different speed 30-300 Preset 120.



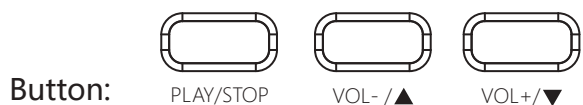
15 INVOKING/SAVE

- A long press on the (INVOKING/SAVE) key saves the current state of the instrument, including all parameters such as tone, rhythm type, rhythm volume, tempo, transpose, intensity type, etc., which can be recalled by a short press on the (INVOKING/SAVE) key to quickly return the instrument to that state when used again.
- Short press the (INVOKING/SAVE) key to recall the function.



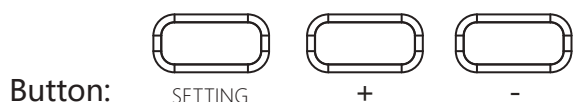
16 MP3

- Short press (VOL- /▲) to switch to the previous song, long press to reduce the MP3 volume.
- Short press (VOL+ /▼) to switch to the next song, long press to increase MP3 volume.
- Press the (PLAY/STOP) key briefly to play the song from the MP3.
- Press and hold the (PLAY/STOP) key to stop playing the song in the MP3.



17 SETTING

Note: Short press the (SETTING) key to select dual tone, reverb, chorus, harmony, and tuning functions, and adjust them with the (+) key or (-) key. Reverb (1-8), Chorus (1-8), Chorus (1-10), Tuning (-100 to 100)





Appendix

| | | | | | | | | | |
|-----|-------------------------|-----|-----------------------|-----|----------------|-----|-----------------|-----|---------------------|
| 000 | Acoustic Grand Piano | 062 | Synth Brass 1 | 124 | Telephone Ring | 186 | Bian Zhong | 248 | Scratch |
| 001 | Bright Acoustic Piano | 063 | Synth Brass 2 | 125 | Helicopter | 187 | Yang Qin 2 | 249 | Wind Chime |
| 002 | Electric Grand Piano | 064 | Soprano Sax | 126 | Applause | 188 | Recorder 2 | 250 | Bi Li |
| 003 | Honky-tonk Piano | 065 | Alto Sax | 127 | Gunshot | 189 | Pan Flute 2 | 251 | JUNO Strings |
| 004 | Electric Piano 1 | 066 | Tenor Sax | 128 | Piano w | 190 | Trumpet 2 | 252 | Funk Gt 1 |
| 005 | Electric Piano 2 | 067 | Baritone Sax | 129 | Piano d | 191 | Trombone 2 | 253 | Funk Gt 2 |
| 006 | Harpsichord | 068 | Oboe | 130 | Bandoneon | 192 | Trombone 3 | 254 | Tubular-bell 2 |
| 007 | Clavichord | 069 | English Horn | 131 | Er Hu | 193 | Pai Gu | 255 | Tubular-bell 3 |
| 008 | Celesta | 070 | Bassoon | 132 | Gu Zheng | 194 | Qin | 256 | Detuned EP1 |
| 009 | Glockenspiel | 071 | Clarinet | 133 | Ukulele | 195 | Contrabass 2 | 257 | E.Piano 1v |
| 010 | Music box | 072 | Piccolo | 134 | Organ 1 | 196 | Harp 2 | 258 | Creaking |
| 011 | Vibraphone | 073 | Flute | 135 | Organ 2 | 197 | Celesta 2 | 259 | Door |
| 012 | Marimba | 074 | Recorder | 136 | Harmonica 2 | 198 | Glockenspiel 2 | 260 | Dist. Gt 2 |
| 013 | Xylophone | 075 | Pan Flute | 137 | Clean Gt 2 | 199 | Music Box 2 | 261 | Dist. Gt 3 |
| 014 | Tubular Bells | 076 | Bottle Blow | 138 | Clean Gt 3 | 200 | Upright Piano 2 | 262 | Tuba 2 |
| 015 | Dulcimer | 077 | Shakuhachi | 139 | Liu Qin | 201 | Upright Piano 3 | 263 | Mute Trumpet 2 |
| 016 | Hammond Organ | 078 | Whistle | 140 | Pi Pa | 202 | Vibraphone 2 | 264 | Screaming |
| 017 | Percussive Organ | 079 | Ocarina | 141 | Sitar 2 | 203 | Hu Lu Si | 265 | Punch |
| 018 | Rock Organ | 080 | Lead 1 (square) | 142 | Mellow Gt | 204 | Marimba 2 | 266 | French Horn 2 |
| 019 | Church Organ | 081 | Lead 2 (sawtooth) | 143 | Chorus Gt | 205 | Di Zi 1 | 267 | French Horn 3 |
| 020 | Reed Organ | 082 | Lead 3 (callope lead) | 144 | Reed Organ 2 | 206 | Di Zi 2 | 268 | Dog |
| 021 | Accordion | 083 | Lead 4 (chiff lead) | 145 | 60s Organ | 207 | Xylophone 2 | 269 | Horse Gallop |
| 022 | Harmonica | 084 | Lead 5 (charang) | 146 | Synth 1 | 208 | Nylon Gt 2 | 270 | Bird 2 |
| 023 | Tango Accordion | 085 | Lead 6 (voice) | 147 | Synth 2 | 209 | Nylon Gt 3 | 271 | Telephone 2 |
| 024 | Acoustic Guitar (nylon) | 086 | Lead 7 (fills) | 148 | Synth 3 | 210 | Analog Bst 1 | 272 | Zhong Hu |
| 025 | Acoustic Guitar (steel) | 087 | Lead 8 (bass+lead) | 149 | Synth 4 | 211 | Analog Bst 2 | 273 | Ma Tou Qin |
| 026 | Electric Guitar (jazz) | 088 | Pad 1 (new age) | 150 | Zhong Ruan | 212 | Heart Beat | 274 | Luo 1 |
| 027 | Electric Guitar (clean) | 089 | Pad 2 (warm) | 151 | Da Ruan | 213 | Footsteps | 275 | Luo 2 |
| 028 | Electric Guitar (muted) | 090 | Pad 3 (polysynth) | 152 | Mandolin | 214 | Accordion 2 | 276 | Castanets |
| 029 | Overdriven Guitar | 091 | Pad 4 (choir) | 153 | Mandolin 2 | 215 | Accordion 3 | 277 | Concert BD |
| 030 | Distortion Guitar | 092 | Pad 5 (bowed) | 154 | Yue Qin | 216 | Siren | 278 | Machine Gun |
| 031 | Guitar Harmonics | 093 | Pad 6 (metallic) | 155 | San Xian | 217 | Train | 279 | Lasergun |
| 032 | Acoustic Bas | 094 | Pad 7 (halo) | 156 | Bottle Blow 2 | 218 | Ba Wu | 280 | Explosion |
| 033 | Electric Bass (finger) | 095 | Pad 8 (sweep) | 157 | Shakuhachi 2 | 219 | Muted Gt 2 | 281 | Feedback Gt |
| 034 | Electric Bass (pick) | 096 | FX 1 (rain) | 158 | Violin 2 | 220 | Muted Gt 3 | 282 | Gt Feedback |
| 035 | Fretless Bass | 097 | FX 2 (soundtrack) | 159 | Viola 2 | 221 | Rain | 283 | Organ 101 |
| 036 | Slap Bass 1 | 098 | FX 3 (crystal) | 160 | Cello 2 | 222 | Thunder | 284 | Detuned Or 1 |
| 037 | Slap Bass 2 | 099 | FX 4 (atmosphere) | 161 | Harpsichord 2 | 223 | Wind | 285 | 60s E.Piano |
| 038 | Synth Bass 1 | 100 | FX 5 (brightness) | 162 | Gu Qin | 224 | Stream | 286 | E.Piano 3 |
| 039 | Synth Bass 2 | 101 | FX 6 (goblins) | 163 | Hawaiian Gt | 225 | Bubble | 287 | Melodic Tom 2 |
| 040 | Violin | 102 | FX 7 (echoes) | 164 | Choir Aahs 2 | 226 | Soprano Sax 2 | 288 | 808 Tom |
| 041 | Viola | 103 | FX 8 (sci-fi) | 165 | Voice doo 2 | 227 | Soprano Sax 3 | 289 | Electric Percussion |
| 042 | Cello | 104 | Sitar | 166 | Synth Voice 2 | 228 | Alto Sax 2 | 290 | Santur 3 |
| 043 | Contrabass | 105 | Banjo | 167 | Rock Organ 2 | 229 | Strings | 291 | Pai Xiao |
| 044 | Tremolo Strings | 106 | Shamisen | 168 | Church Organ 2 | 230 | Guan Zi 1 | 292 | South Xiao |
| 045 | Pizzicato Strings | 107 | Koto | 169 | Shen 1 | 231 | Guan Zi 2 | 293 | Xiao |
| 046 | Orchestral Harp | 108 | Kalimba | 170 | Shen 2 | 232 | Oboe 2 | 294 | Kou Di |
| 047 | Timpani | 109 | Bagpipe | 171 | Brass 2 | 233 | English Horn 2 | 295 | Xun |
| 048 | String Ensemble 1 | 110 | Fiddle | 172 | Synth Brass 3 | 234 | Bassoon 2 | 296 | Gao Hu |
| 049 | String Ensemble 2 | 111 | Shanai | 173 | Square 2 | 235 | Clarinet 2 | 297 | Gt.Cut Noise |
| 050 | Synth Strings 1 | 112 | Tinkle Bell | 174 | Sine Wave | 236 | Tenor Sax 2 | 298 | String Slap |
| 051 | Synth Strings 2 | 113 | Agogo | 175 | Saw 2 | 237 | Tenor Sax 3 | 299 | Fl.Key Click |
| 052 | Choir Aahs | 114 | Steel Drums | 176 | Doctor Solo | 238 | Baritone Sax 2 | 300 | Car-Engine |
| 053 | Voice Oohs | 115 | Woodblock | 177 | Vox Lead | 239 | Honky-Tonk w | 301 | Car-Stop |
| 054 | Synth Voice | 116 | Taiko Drum | 178 | Piccolo 2 | 240 | Rhodes 2 | 302 | Car-Pass |
| 055 | Orchestra Hit | 117 | Melodic Tom | 179 | Flute 2 | 241 | Steel Gt 2 | 303 | Car-Crash |
| 056 | Trumpet | 118 | Synth Drum | 180 | Space Voice | 242 | Steel Gt 3 | 304 | Organ 201 |
| 057 | Trombone | 119 | Reverse Cymbal | 181 | Syn Mallet | 243 | 12-str.Gt | 305 | Detuned Or 2 |
| 058 | Tuba | 120 | Guitar Fret Noise | 182 | Brightness 2 | 244 | Burst Noise | 306 | Na Zi 1 |
| 059 | Muted Trumpet | 121 | Breath Noise | 183 | Goblin 2 | 245 | Laughing | 307 | Na Zi 2 |
| 060 | French Horn | 122 | Seashore | 184 | Echo Bell | 246 | Jetplane | 308 | Ban Hu |
| 061 | Brass Section | 123 | Bird Tweet | 185 | Echo Pan | 247 | Starship | 309 | Jing Hu |



Appendix

| Tone | Name | Tone | Name | Tone | Name | Tone | Name | Tone | Name |
|------|--------------------------|------|---------------------------|------|--------------------|------|---------------------------|------|---------------------|
| 310 | Hu Ensemble 1 | 372 | Fretless Bass | 434 | Honky-tonk Piano 2 | 496 | Rain 3 | 558 | Punch 3 |
| 311 | Hu Ensemble 2 | 373 | Fretless Bass 2 | 435 | Hu Lu Si 2 | 497 | Thunder 2 | 559 | Heart Beat 3 |
| 312 | Detuned EP 2 | 374 | Fretless Bass 3 | 436 | Pai Xiao 2 | 498 | Wind 2 | 560 | Footsteps 3 |
| 313 | E Piano 2v | 375 | Mandolin 3 | 437 | South Xiao 2 | 499 | Stream 2 | 561 | Brightness 3 |
| 314 | Acoustic Bass | 376 | Hammond Organ 2 | 438 | Square 3 | 500 | Siren 2 | 562 | Goblin 2 |
| 315 | Acoustic Bass 2 | 377 | Hammond Organ 3 | 439 | Sine Wave 2 | 501 | Funk Gt 3 | 563 | Echo Bell 2 |
| 316 | Acoustic Bass 3 | 378 | Reed Organ 3 | 440 | Cello 3 | 502 | Piano w 2 | 564 | Echo Pan 2 |
| 317 | Electric Guitar 2 (jazz) | 379 | Ukulele 2 | 441 | Brass 3 | 503 | Bright Acoustic Piano 3 | 565 | Gt. Cut Noise 3 |
| 318 | Electric Guitar 3 (jazz) | 380 | Organ 3 | 442 | Shakuhachi 3 | 504 | Whistle 3 | 566 | String Slap 3 |
| 319 | Grand Piano K 2 | 381 | Rock Organ 3 | 443 | Explosion 2 | 505 | Ocarina 3 | 567 | Bi Li 3 |
| 320 | Dream Piano | 382 | Glockenspiel 3 | 444 | Clavichord 3 | 506 | Banjo 3 | 568 | Ba Wu 3 |
| 321 | Harmonica 3 | 383 | Clavichord 2 | 445 | Ba Wu | 507 | Synth Drum 3 | 569 | Ban Hu 3 |
| 322 | Piccolo 3 | 384 | Tinkle Bell 2 | 446 | Di Zi 3 | 508 | Reverse Cymbal 3 | 570 | Jing Hu 3 |
| 323 | Flute 3 | 385 | Agogo 2 | 447 | Oboe 3 | 509 | Applause 3 | 571 | Synth 1 |
| 324 | Ocarina 2 | 386 | Shakuhachi 2 | 448 | English Horn 3 | 510 | Gunshot 3 | 572 | Synth 2 |
| 325 | Shamisen 2 | 387 | Whistle 2 | 449 | Bassoon 3 | 511 | Detuned Or 3 | 573 | Bandoneon 3 |
| 326 | Koto 2 | 388 | Synth Bass 3 | 450 | Bird Tweet 3 | 512 | Sanjur 2 | 574 | Guitar Fret Noise 3 |
| 327 | Celesta 3 | 389 | Strings 3 | 451 | Telephone Ring 3 | 513 | Mandolin 3 | 575 | Breath Noise 3 |
| 328 | Shen 3 | 390 | Acoustic Grand Piano 2 | 452 | Helicopter 2 | 514 | Doctor Solo 2 | 576 | Seashore 3 |
| 329 | Xiao 2 | 391 | Bright Acoustic Piano 2 | 453 | Bi Li | 515 | Vox Lead 2 | 577 | Shamisen 3 |
| 330 | Star 3 | 392 | Tango Accordion 2 | 454 | Guan Zi 1 | 516 | Space Voice 2 | 578 | Koto 3 |
| 331 | Alto Sax 2 | 393 | Distortion Guitar 2 | 455 | Guan Zi 2 | 517 | Syn Mallet 2 | 579 | Kalimba 3 |
| 332 | Tenor Sax 3 | 394 | Guitar Harmonics 2 | 456 | Dog 2 | 518 | 808 Tom 3 | 580 | Bagpipe 3 |
| 333 | Kalimba 2 | 395 | Steel Drums 2 | 457 | Horse Gallop 2 | 519 | Electric Percussion 3 | 581 | Fiddle 3 |
| 334 | Bagpipe 2 | 396 | Woodblock 2 | 458 | Pai Gu 2 | 520 | Jetplane 33 | 582 | Shanai 3 |
| 335 | Bandoneon 2 | 397 | Taiko Drum 2 | 459 | Qin 2 | 521 | Starship 3 | 583 | Rain |
| 336 | Recorder 3 | 398 | Ban Hu 2 | 460 | Bian Zhong 2 | 522 | Concert BD 2 | 584 | Sound Track |
| 337 | Pan Flute 3 | 399 | Jing Hu 2 | 461 | Jetplane 2 | 523 | Sine Wave 3 | 585 | Crystal |
| 338 | Music Box 3 | 400 | Breath Noise 2 | 462 | Starship 2 | 524 | Bassoon | 586 | Atmosphere |
| 339 | Banjo 2 | 401 | Seashore 2 | 463 | Burst Noise 2 | 525 | Clarinet | 587 | Brightness |
| 340 | Clarinet 3 | 402 | Zhong Hu 2 | 464 | Alto Sax 3 | 526 | Tenor Oboe | 588 | Vibraphone |
| 341 | Electric Bass (pick) | 403 | Ma Tou Qin 2 | 465 | Mute Trumpet 3 | 527 | Mellow Gt 2 | 589 | Goblins |
| 342 | Electric Bass 2 (pick) | 404 | Vibraphone 3 | 466 | Punch | 528 | Hawaiian Gt 2 | 590 | Echoes |
| 343 | Sanjur | 405 | Marimba 3 | 467 | Heart Beat 2 | 529 | Ukulele 3 | 591 | Sci-Fi |
| 344 | Percussive Organ 2 | 406 | Xylophone 3 | 468 | Footsteps 2 | 530 | Castanets 3 | 592 | Callipe Lead |
| 345 | Percussive Organ 3 | 407 | Applause 2 | 469 | Honky Tonk w 3 | 531 | Fl Key Click | 593 | Chiff Lead |
| 346 | Acoustic Bas 2 | 408 | Gunshot 2 | 470 | Rhodes 3 | 532 | Liverpool Bass | 594 | Charang Lead |
| 347 | Electric Bass 2 (finger) | 409 | Melodic Tom 2 | 471 | Saw 3 | 533 | Picked Bass | 595 | Voic Lead |
| 348 | Electric Bass 2 (pick) | 410 | Synth Drum 2 | 472 | Liu Qin 2 | 534 | Prog Rock Bass | 596 | 5th Lead |
| 349 | Fretless Bass 2 | 411 | Synth Voice 3 | 473 | Pi Pa 2 | 535 | fretless bass | 597 | Bass Lead |
| 350 | Glockenspiel 2 | 412 | Orchestra Hit 2 | 474 | Zhong Ruan 2 | 536 | Wooden case bass | 598 | Funk Gt 1 |
| 351 | Fiddle 2 | 413 | Hu Ensemble 3 | 475 | Da Ruan 2 | 537 | Electric Guitar 3 (clean) | 599 | Funk Gt 2 |
| 352 | Shanai 2 | 414 | Tremolo Strings 2 | 476 | Car-Engine 2 | 538 | Overdriven Guitar 3 | 600 | Warm Piano |
| 353 | Guitar Fret Noise 2 | 415 | Pizzicato Strings 2 | 477 | Car-Stop 2 | 539 | Chorus Gt 3 | 601 | Chorused Piano |
| 354 | Percussive Organ | 416 | Electric Guitar 2 (clean) | 478 | Car-Pass 2 | 540 | Timpani 3 | 602 | 70s E organ |
| 355 | Muted Trumpet 2 | 417 | Overdriven Guitar 2 | 479 | Car-Crash 2 | 541 | Pizzicato Strings | 603 | France Accordion |
| 356 | French Horn 2 | 418 | Orchestral Harp 3 | 480 | Yue Qin 2 | 542 | Tremolo Strings | 604 | Spanish Guitar |
| 357 | Trumpet 3 | 419 | Gao Hu 2 | 481 | San Xian 2 | 543 | Orchestral Harp | 605 | Rubber Bass |
| 358 | Tuba 3 | 420 | Er Hu 2 | 482 | Gt. Cut Noise 2 | 544 | Orchestra Hit | 606 | Slow Violin |
| 359 | Machine Gun 2 | 421 | Timpani 2 | 483 | String Slap 2 | 545 | Shakuhachi 3 | 607 | Analog Strings |
| 360 | Lasergun 2 | 422 | Reverse Cymbal 2 | 484 | Fl Key Click 2 | 546 | New Age | 608 | Grow Sax |
| 361 | Train 2 | 423 | Choir Aahs 2 | 485 | Baritone Sax 3 | 547 | Warm Pad | 609 | Bass Clarinet |
| 362 | Castanets 2 | 424 | Voice Oohs 2 | 486 | Laughing 2 | 548 | PolySynth | | |
| 363 | Bottle Blow 3 | 425 | 12-str. Gt 2 | 487 | Screaming 2 | 549 | Choir Pad | | |
| 364 | Choir Aahs 3 | 426 | Brass Section 2 | 488 | Recorder 2 | 550 | Bow Glass | | |
| 365 | Voice doo 3 | 427 | Kou Di 2 | 489 | Pan Flute 2 | 551 | Metal Pad | | |
| 366 | Gu Qin 2 | 428 | Xun 2 | 490 | Scratch 2 | 552 | Halo Pad | | |
| 367 | Gu Zheng 2 | 429 | Melodic Tom 3 | 491 | Wind Chime 2 | 553 | Sweep | | |
| 368 | Bass Drum | 430 | 808 Tom 2 | 492 | Creaking 2 | 554 | Pai Gu 3 | | |
| 369 | Bubble 2 | 431 | Electric Percussion 2 | 493 | Door 2 | 555 | Qin 3 | | |
| 370 | English Horn 3 | 432 | Marimba 2 | 494 | 60s E Piano 2 | 556 | Bian Zhong 3 | | |
| 371 | Bassoon 3 | 433 | Xylophone 2 | 495 | Chorus Gt 2 | 557 | Screaming 3 | | |



Appendix

| Rhythm | LCD | Rhythm | LCD | Rhythm | LCD | Rhythm | LCD |
|--------|--------------|--------|-----------------|--------|-------------|--------|---------------|
| R000 | 6.8BLUES | R062 | COUNTRY8 | R124 | FUNK5 | R186 | ROCKNROLL1 |
| R001 | 4.4BLUES | R063 | COUNTRY9 | R125 | FUNK6 | R187 | ROCKNROLL2 |
| R002 | 5.4BEAT1 | R064 | COUNTRY10 | R126 | FUNK7 | R188 | BEGUINE1 |
| R003 | 5.4BEAT2 | R065 | COUNTRY11 | R127 | R&B1 | R189 | BEGUINE2 |
| R004 | BOOGIEWOOGIE | R066 | COUNTRY12 | R128 | R&B2 | R190 | CARIBBEAN |
| R005 | soulshuffle | R067 | COUNTRY13 | R129 | R&B3 | R191 | BOLERO |
| R006 | RAGTIME1 | R068 | COUNTRY14 | R130 | R&B4 | R192 | DANGDUT |
| R007 | RAGTIME2 | R069 | COUNTRY15 | R131 | R&B5 | R193 | CHINA |
| R008 | SHUFFLE1 | R070 | COUNTRY16 | R132 | R&B6 | R194 | JIANGNAN |
| R009 | SHUFFLE2 | R071 | COUNTRYPOP | R133 | 16BEAT1 | R195 | XIZANG |
| R010 | SHUFFLE3 | R072 | COUNTRYSHUFFLE1 | R134 | 16BEAT2 | R196 | YUNNAN |
| R011 | SHUFFLE4 | R073 | COUNTRYSHUFFLE2 | R135 | 16BEAT3 | R197 | HAWAII |
| R012 | BLUES1 | R074 | COUNTRYSWING | R136 | 16BEAT4 | R198 | GUARACHA |
| R013 | BLUES2 | R075 | LATIN1 | R137 | 16BEAT5 | R199 | CHARLESTON |
| R014 | BLUES3 | R076 | LATIN2 | R138 | 16BEAT6 | R200 | V6.8BLUES |
| R015 | BLUES4 | R077 | LATIN3 | R139 | 16BEAT7 | R201 | V4.4BLUES |
| R016 | TWIST1 | R078 | LATIN4 | R140 | 16BEAT8 | R202 | V5.4BEAT1 |
| R017 | TWIST2 | R079 | LATIN5 | R141 | POP1 | R203 | V5.4BEAT2 |
| R018 | TWIST3 | R080 | LATIN6 | R142 | POP2 | R204 | VBOOGIEWOOGIE |
| R019 | TWIST4 | R081 | TANGO1 | R143 | POP3 | R205 | Vsoulshuffle |
| R020 | GOSPEL1 | R082 | TANGO2 | R144 | POP4 | R206 | VRAGTIME1 |
| R021 | GOSPEL2 | R083 | RUMBA1 | R145 | POP5 | R207 | VRAGTIME2 |
| R022 | GOSPEL3 | R084 | RUMBA2 | R146 | POP6 | R208 | VSHUFFLE1 |
| R023 | R&B | R085 | RUMBA3 | R147 | POP7 | R209 | VSHUFFLE2 |
| R024 | SWING1 | R086 | CHACHA1 | R148 | POP8 | R210 | VSHUFFLE3 |
| R025 | SWING2 | R087 | CHACHA2 | R149 | VINTAGE1 | R211 | VSHUFFLE4 |
| R026 | BLUEBOOGIE | R088 | CHACHA3 | R150 | VINTAGE2 | R212 | VBLUES1 |
| R027 | JAZZ1 | R089 | CHACHA4 | R151 | FOLKPOP | R213 | VBLUES2 |
| R028 | JAZZ2 | R090 | CHACHA5 | R152 | NEWAGE | R214 | VBLUES3 |
| R029 | JAZZ3 | R091 | CHACHA6 | R153 | POPBOSSA1 | R215 | VBLUES4 |
| R030 | JAZZ4 | R092 | BOSSANOVA1 | R154 | POPBOSSA2 | R216 | VTWIST1 |
| R031 | JAZZ5 | R093 | BOSSANOVA2 | R155 | POPRAP | R217 | VTWIST2 |
| R032 | JAZZBALLAD | R094 | BOSSANOVA3 | R156 | POPSAMBA | R218 | VTWIST3 |
| R033 | JAZZWALTZ | R095 | SAMBA1 | R157 | 8BEAT1 | R219 | VTWIST4 |
| R034 | JAZZBAND1 | R096 | SAMBA2 | R158 | 8BEAT2 | R220 | VGOSPEL1 |
| R035 | JAZZBAND2 | R097 | SAMBA3 | R159 | 8BEAT3 | R221 | VGOSPEL2 |
| R036 | JAZZBAND3 | R098 | MAMBO1 | R160 | 8BEAT4 | R222 | VGOSPEL3 |
| R037 | SWINGJAZZ | R099 | MAMBO2 | R161 | 8BEAT5 | R223 | VR&B |
| R038 | COOLJAZZ | R100 | MAMBO3 | R162 | 8BEAT6 | R224 | VSWING1 |
| R039 | DIXIELAND1 | R101 | REGGAE1 | R163 | 8BEAT7 | R225 | VSWING2 |
| R040 | DIXIELAND2 | R102 | REGGAE2 | R164 | 8BEAT8 | R226 | VBLUEBOOGIE |
| R041 | FUSION | R103 | SALSA1 | R165 | 8BEAT9 | R227 | VJAZZ1 |
| R042 | LANGE | R104 | SALSA2 | R166 | 8BEATROCK1 | R228 | VJAZZ2 |
| R043 | SOUL1 | R105 | MODERN1 | R167 | 8BEATROCK2 | R229 | VJAZZ3 |
| R044 | SOUL2 | R106 | MODERN2 | R168 | Rock1 | R230 | VJAZZ4 |
| R045 | SOUL3 | R107 | DANCE1 | R169 | Rock2 | R231 | VJAZZ5 |
| R046 | FOXTROT1 | R108 | DANCE2 | R170 | Rock3 | R232 | VJAZZBALLAD |
| R047 | FOXTROT2 | R109 | DANCE3 | R171 | Rock4 | R233 | VJAZZWALTZ |
| R048 | FOXTROT3 | R110 | DANCE4 | R172 | Rock5 | R234 | VJAZZBAND1 |
| R049 | FOXTROT4 | R111 | DANCE5 | R173 | INDIEROCK1 | R235 | VJAZZBAND2 |
| R050 | FOXTROT5 | R112 | DANCE6 | R174 | INDIEROCK2 | R236 | VJAZZBAND3 |
| R051 | FOXTROT6 | R113 | DANCE7 | R175 | 60thRock | R237 | VSWINGJAZZ |
| R052 | FOXTROT7 | R114 | 70DISCO1 | R176 | GlamMetal1 | R238 | VCOOLJAZZ |
| R053 | FOXTROT8 | R115 | 70DISCO2 | R177 | GlamMetal2 | R239 | VDIXIELAND1 |
| R054 | FOXTROT9 | R116 | DISCO1 | R178 | GlamMetal3 | R240 | VDIXIELAND2 |
| R055 | COUNTRY1 | R117 | DISCO2 | R179 | PunkRock1 | R241 | VFUSION |
| R056 | COUNTRY2 | R118 | DISCO3 | R180 | PunkRock2 | R242 | VLANGE |
| R057 | COUNTRY3 | R119 | VAPERWAVE | R181 | PunkRock3 | R243 | VSOUL1 |
| R058 | COUNTRY4 | R120 | FUNK1 | R182 | PunkRock4 | R244 | VSOUL2 |
| R059 | COUNTRY5 | R121 | FUNK2 | R183 | PunkRock5 | R245 | VSOUL3 |
| R060 | COUNTRY6 | R122 | FUNK3 | R184 | JIVEROCK | R246 | VFOXTROT1 |
| R061 | COUNTRY7 | R123 | FUNK4 | R185 | ROCKSHUFFLE | R247 | VFOXTROT2 |



Appendix

| Rhythm | LCD | Rhythm | Rhythm | Modelsong | LCD | Modelsong | LCD |
|--------|------------|--------|-------------|-----------|--------------|-----------|---|
| R248 | VFOXTROT3 | R310 | 8Soul2 | R372 | VRock5 | R000 | Funk |
| R249 | VFOXTROT4 | R311 | 8Rock1 | R373 | VINDIEROCK1 | R001 | River_of_ dream |
| R250 | VFOXTROT5 | R312 | 8Rock2 | R374 | VINDIEROCK2 | R002 | DancingQueen |
| R251 | VFOXTROT6 | R313 | Clas8Bet | R375 | V60thRock | R003 | Donna_ lee |
| R252 | VFOXTROT7 | R314 | VintaGtr | R376 | VGlamMetal1 | R004 | Forget |
| R253 | VFOXTROT8 | R315 | SchItali | R377 | VGlamMetal2 | R005 | Chopin:grande Valse Brillante |
| R254 | VFOXTROT9 | R316 | 70sDisc1 | R378 | VGlamMetal3 | R006 | Across The Sea |
| R255 | VCOUNTRY1 | R317 | 70sDisc2 | R379 | VPunkRock1 | R007 | Xaver Scharwenkopish Dance Op.:3No.1 |
| R256 | VCOUNTRY2 | R318 | FnkyDsco | R380 | VPunkRock2 | R008 | Red Chery And White Apple Blossom |
| R257 | VCOUNTRY3 | R319 | SatNight | R381 | VPunkRock3 | R009 | County_ garden |
| R258 | VCOUNTRY4 | R320 | ClubLtn | R382 | VPunkRock4 | R010 | Courante |
| R259 | VCOUNTRY5 | R321 | DscoChoc | R383 | VPunkRock5 | R011 | Just Drunk |
| R260 | VCOUNTRY6 | R322 | DiscoFox | R384 | VJIVEROCK | R012 | Carry Me Back To OldVimny |
| R261 | VCOUNTRY7 | R323 | DiscoFnk | R385 | VROCKSHUFFLE | R013 | Early_ autumn |
| R262 | VCOUNTRY8 | R324 | DscoHand | R386 | VROCKNROLL1 | R014 | Twist Variation |
| R263 | VCOUNTRY9 | R325 | DscoPrty | R387 | VROCKNROLL2 | R015 | Danse Negre Op.58 |
| R264 | VCOUNTRY10 | R326 | DscoSmba | R388 | VBEGUINE1 | R016 | Palm Leaf |
| R265 | VCOUNTRY11 | R327 | UKPop | R389 | VBEGUINE2 | R017 | D Major Tango |
| R266 | VCOUNTRY12 | R328 | ClubDnce | R390 | VCARIBBEAN | R018 | Symphony No.94 Surprise |
| R267 | VCOUNTRY13 | R329 | ModernRB | R391 | VBOLERO | R019 | Katyusha |
| R268 | VCOUNTRY14 | R330 | HipShffl | R392 | VDANGDUT | R020 | Desafinado |
| R269 | VCOUNTRY15 | R331 | ChriSton | R393 | VCHINA | R021 | Beethoven_ bagatelles |
| R270 | RockPop | R332 | DiscoPop | R394 | VJIANGNAN | R022 | In_the_hall_of_the_ mountain_king |
| R271 | RockRol1 | R333 | DiscSoul | R395 | VXIZANG | R023 | Exploring |
| R272 | RockRol2 | R334 | DiscTrot | R396 | VYUNNAN | R024 | Perelude Iii |
| R273 | StrtRock | R335 | EuroBea2 | R397 | VHAWAII | R025 | Grand March |
| R274 | JazRock2 | R336 | Rap3 | R398 | VGUARACHA | R026 | Paraphrase |
| R275 | FastGosp | R337 | Rave | R399 | VCHARLESTON | R027 | Dangerous Area |
| R276 | FolRock2 | R338 | Techno2 | | | R028 | Future |
| R277 | Skiffle | R339 | Techno3 | | | R029 | Sunshine Beach |
| R278 | FuPoRock | R340 | 70DisFuk | | | R030 | June Samba |
| R279 | ContRock | R341 | DiscoPhi | | | R031 | Kennys:songbird |
| R280 | AcouRock | R342 | DiscoHou | | | R032 | Linveno In F Minor |
| R281 | 50sPop2 | R343 | 80sDisco | | | R033 | Wine |
| R282 | CoolPop | R344 | SchPolka | | | R034 | Blues |
| R283 | GroovPop | R345 | PolkaPop | | | R035 | Feeling |
| R284 | 60sVinta | R346 | BluGrss1 | | | R036 | Turkey |
| R285 | 80sPop2 | R347 | BluGrss2 | | | R037 | Etude In F Sharp Major |
| R286 | RapPop | R348 | BluGrss3 | | | R038 | Funny Gentleman |
| R287 | PopRock3 | R349 | PopWltz2 | | | R039 | Ido It For You |
| R288 | 60sSoul | R350 | USAMarch | | | R040 | Beethoven Piano Sonta.No.30 |
| R289 | 70sSoul | R351 | HullGull | | | R041 | Carmen |
| R290 | Funk | R352 | Tarantla | | | R042 | American Patrol |
| R291 | 16Shuffl | R353 | LmboRock | | | R043 | Mendelssohnrondo In D Major |
| R292 | Twist2 | R354 | SwgWaltz | | | R044 | Aurora Of City |
| R293 | BritPop1 | R355 | PubPiano | | | R045 | Wish U Christmas |
| R294 | BritPop2 | R356 | JzzWltz2 | | | R046 | No Stopping Galop |
| R295 | HardRk1 | R357 | JzzWltz3 | | | R047 | Last Summer |
| R296 | HardRk2 | R358 | ShowTune | | | R048 | Jazz |
| R297 | Fusion2 | R359 | Polka2 | | | R049 | Rhythm Of The Rain |
| R298 | Fusion3 | R360 | V8BEAT4 | | | R050 | Twinkle Twinkle Variation |
| R299 | FunkShf1 | R361 | V8BEAT5 | | | R051 | Atlantis |
| R300 | FunkShf2 | R362 | V8BEAT6 | | | R052 | Flying Trapeze |
| R301 | FusShuf1 | R363 | V8BEAT7 | | | R053 | Trois Ecosaisais Op.72.no.3- -5 |
| R302 | FusShuf2 | R364 | V8BEAT8 | | | R054 | Allegro Con Brio |
| R303 | ClubPop1 | R365 | V8BEAT9 | | | R055 | Lemon Tree |
| R304 | ClubPop2 | R366 | V8BEATROCK1 | | | R056 | Arabesque |
| R305 | 16Pop1 | R367 | V8BEATROCK2 | | | R057 | Childhood |
| R306 | 16Pop2 | R368 | VRock1 | | | R058 | Just The Two Of Us |
| R307 | 8Pop1 | R369 | VRock2 | | | R059 | See Shore |
| R308 | 8Pop2 | R370 | VRock3 | | | R060 | All Kind Of My Everything |
| R309 | 8Soul1 | R371 | VRock4 | | | | |
| | | | | | | R061 | Noctume Op.9No2 |
| | | | | | | R062 | Something In The Air |
| | | | | | | R063 | Comfort |
| | | | | | | R064 | Let It Snow |
| | | | | | | R065 | Bingo |
| | | | | | | R066 | Liebestraum |
| | | | | | | R067 | Perfect Happiness |
| | | | | | | R068 | Toccata |
| | | | | | | R069 | La Bamba |
| | | | | | | R070 | Rando Capriccio |
| | | | | | | R071 | Scherzo |
| | | | | | | R072 | La Campanella |
| | | | | | | R073 | Lockout |
| | | | | | | R074 | Romance De Amor |
| | | | | | | R075 | Barcarole |
| | | | | | | R076 | Chopin:etude In C Minor Op.10.No.12 |
| | | | | | | R077 | Dance Of Youth |
| | | | | | | R078 | Grieg_ air |
| | | | | | | R079 | The Home Coming |
| | | | | | | R080 | Lazy_ bird |
| | | | | | | R081 | Red River Valley |
| | | | | | | R082 | Entertainment |
| | | | | | | R083 | Chopin:mazurka Op.39.No.10 |
| | | | | | | R084 | The Bear In The Forest |
| | | | | | | R085 | Primitive Dance Steps |
| | | | | | | R086 | Modern Gray |
| | | | | | | R087 | Moonlight |
| | | | | | | R088 | LOVE FOREVER |
| | | | | | | R089 | JARDIN SECRET |
| | | | | | | R090 | BALL |
| | | | | | | R091 | COUNTRY |
| | | | | | | R092 | SOMALIL AND |
| | | | | | | R093 | MAPLE LEAF RAG |
| | | | | | | R094 | BRAHMS_ CONCERTO |
| | | | | | | R095 | WALTZ IN D FLAT, OP.64 NO.1 |
| | | | | | | R096 | COBWEB |
| | | | | | | R097 | HAPPY BOSSA |
| | | | | | | R098 | SIL. ENT NIGHT |
| | | | | | | R099 | CURIOUS STORY |
| | | | | | | R100 | Mozart's Fantasia |
| | | | | | | R101 | Flowing Stream |
| | | | | | | R102 | Chrysanthemum |
| | | | | | | R103 | Ducks on the grass |
| | | | | | | R104 | Red scarf |
| | | | | | | R105 | My brother |
| | | | | | | R106 | Anne 's laurel |
| | | | | | | R107 | Beautiful Dreamer |
| | | | | | | R108 | Farewell |
| | | | | | | R109 | Sunrise house |
| | | | | | | R110 | Tchaikovsky's song of Skylark |
| | | | | | | R111 | Red jacket |
| | | | | | | R112 | Beijing drum accompaniment |
| | | | | | | R113 | Paradise cinema |
| | | | | | | R114 | Tchaikovsky's sweet dream |
| | | | | | | R115 | Rondo |
| | | | | | | R116 | The Napoleonic dance by Tchaikovsky |
| | | | | | | R117 | Tchaikovsky's Waltz |
| | | | | | | R118 | Blue bells in Scotland |
| | | | | | | R119 | Cannon |



PRODUCT MAINTENANCE

Careful maintenance and protection of this product plays an important role in prolonging the service life of the product and reducing the failure.

1 AVOID HEATING, DAMPNESS OR DIRECT SUNLIGHT

Do not over expose the product to direct sunlight, or place it near air conditioning or extremely hot place.

2 DO NOT USE NEAR THE TV OR RADIO

This product may cause video or audio interference to the reception of TV and radio. If this happens, the product should be removed from the TV or radio.

3 NO DILUENTS OR SIMILAR CHEMICALS SHOULD BE USED FOR CLEANING

Clean the product with a soft cloth wetted with weak water solution and neutral detergent. Soak the cloth in a solution and wring it dry until it approaches drying.

4 DO NOT SHAKE, AVOID COLLISION

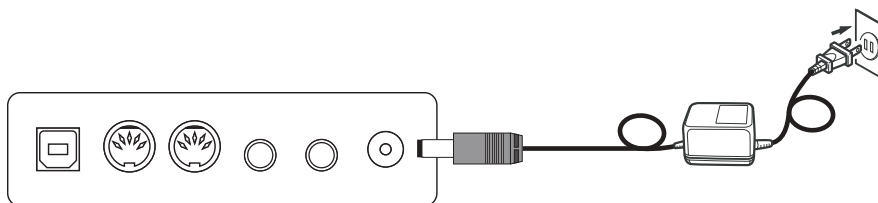
When moving, the product should be handled carefully and lightly. Violent vibration and collision are strictly prohibited in order to avoid damage to the shell or internal electronic components.



SAFETY PRECAUTIONS

POWER SUPPLY

This product can be powered by standard indoor wall socket. Please only use the power cord equipped with this product. Be sure to turn off the power when not in use temporarily. When not in use for a long time, please unplug the power cord and keep it properly.



SIGN

To ensure that you use this product safely and correctly, to prevent harm to users and others and financial damage, this manual and products are marked with a series of safety signs. The various signs and their meanings are as follows:

WARNING

This sign indicates that there is a potential risk of death or serious injury if this mark is ignored and the product is mishandled.

BE CAREFUL

This sign indicates that there is a potential danger of injury to personnel or other financial damage if this sign is ignored and the product is operated incorrectly.

EXAMPLE OF LOGO



This triangle sign (\triangle) indicates what users should pay attention to. (The left example is careful shocks)



A circular sign (\odot) with an oblique line indicates prohibitions. The icons in or beside the logo indicate the contents specifically prohibited. (The example on the left is no disassembly)



The round black bottom sign (\bullet) indicates what must be observed. The diagrams in this sign indicate the contents of the specific matters that must be observed. (The example on the left is that the power plug must be pulled out of the socket)



SAFETY PRECAUTIONS

⚠ WARNING

Smoke, odor, overheating

When the product smokes, smells or overheats, there is a danger of fire and electric shock when it is used continually. In case of the above situation, the following operations should be performed immediately:

1. Turn off the power supply.
2. Pull the plug out of the power outlet.
3. Contact your dealer.

Power cord

1. The improper use of power cord may cause fire and electric shock. The following precautions must be observed:

- The special power cord designated for this product must be used.
- The AC power supply with output voltage within the rated voltage range for household use must be used.
- Do not overload power sockets and extension lines.



2. The improper treatment of power line will lead to its damage or breakage, which will cause fire and electric shock hazards. The following precautions must be observed:

- Do not place or heat heavy objects on power lines.
- Do not attempt to alter or bend the power cord too much.
- Do not twist or pull the power cord.
- If the power cord or plug is damaged, please replace the same type of power cord.



3. Do not touch the power cord and plug with wet hands, otherwise there is a danger of electric shock.



4. Please use the power cord where the water will not splash. Water is in danger of causing fire and electric shock.



5. Never place vases or any other container containing water on this product. Water is dangerous of causing fire and electric shock.



6. Do not allow minors to unplug and touch power lines or connection boards. Minors have no common sense of electricity safety, which may cause electric shock.



⚠ BE CAREFUL

The improper use of power cord may cause fire and electric shock. The following precautions must be observed:

- Never put the power cord near the oven or other heat source.
- Do not pull the cable when pulling out of the power socket. The main body of the plug must be grasped.
- The power cord plug must be inserted in the socket to the end.
- Make sure the power supply is off before connecting or disconnecting it.
- When thunderstorms occur or before traveling or other long-term departure, disconnect the power cord from the wall outlet.
- At least once a year, remove the power cord from the wall outlet and clean the dust accumulated around the plug.



Do not burn this product

Do not put this product in the fire, otherwise it will lead to product combustion and explosion of internal electronic components, which will cause fire and personnel injury.



Water and foreign bodies

Water, other liquids and (metal sheets, etc.) entering this product are in danger of causing fire and electric shock. In case of the above situation, the following operations shall be performed immediately:



1. Turn off the power supply.
2. If you are using a power cord for power supply, unplug it from the wall outlet.
3. Contact your distributor.

Disassembly and transformation

Do not disassemble or transform the product in any way, otherwise there is a risk of electric shock, scald or other personal injury. All internal inspection, adjustment and maintenance operations should be entrusted to your distributor.





SAFETY PRECAUTIONS

Falling or colliding

If the product falls or is damaged by strong impact, it will be in danger of causing fire and electric shock. In case of the above situation, the following operations shall be performed immediately:

1. Turn off the power supply.
2. If you are using a power cord for power supply, you need to unplug it from the wall outlet.
3. Contact your distributor.



Plastic bag

Do not let anyone put plastic bags for this product on his head or in his mouth.

Otherwise, there is a risk of asphyxia.

Families with young children should pay special attention to it.



Keep a distance from the product and the bracket

Climbing the bracket is dangerous of overturning or damage. Families with young children should pay special attention to it.



Put

Avoid placing the product on an uneven surface or any other unstable place.

Otherwise, it will cause the product to fall down, which will lead to the risk of injury.



Product Mobility

Before moving this product, you must unplug the power cord plug from the wall outlet and pull out all other cables and connecting wires. Otherwise, it will lead to damage of power or connection wires, resulting in fire and electric shock.



clean

Before cleaning this product, you must unplug the power cord plug from the wall outlet, otherwise there is a risk of fire and electric shock.



Jack

The socket of this product can only be connected to the designated equipment and devices. Connecting non-designated equipment or devices is dangerous of causing fire and electric shock.



Location selection

It should be avoided to place the product in the following places, otherwise there is a risk of fire and electric shock.

- High temperature or dusty places.
- Kitchen or other places with lampblack.
- Where the product is exposed to direct sunlight, or any other place where the product will produce high temperature.



Volume

Don't play music long and loud. Pay special attention when using headphones.

Excessive volume can damage your hearing.



Heavy

Do not place heavy objects on this product. Otherwise, the top of the product will be overweight, causing the product to overturn or drop objects on it, which will lead to the risk of injury.



Correct assembly of scaffolds

The incorrect assembly of the bracket may overturn, causing the product to fall off and posing a risk of injury to personnel. Therefore, it must be assembled according to the instructions in the attached installation guide to ensure that the product is properly mounted on its bracket.





WARRANTY CARD

Warranty rules

1. Faults arising from normal use of this product can be guaranteed free of charge for _____ days from the date of purchase.
2. Failure occurs during the warranty period. This warranty card and shopping ticket must be presented during maintenance.
3. In the following cases, no free warranty will be provided:
 - Damage caused by improper use by users.
 - Fault damage caused by irresistible factors such as fire, flood, earthquake and lightning strike.
 - Failure caused by unauthorized self-disassembly.
4. After exceeding the warranty period, the company is responsible for maintenance, but it needs to charge a cost fee.

Seller: _____

Address: _____

Telephone: _____

Maintenance record

| Date | Maintenance record | Repairman |
|------|--------------------|-----------|
| | | |
| | | |
| | | |
| | | |
| | | |



